



KEMFLOC DOWN PLUS

Sinking flocculant with high charge density

FEATURES

KEMFLOC DOWN PLUS is a liquid formulation containing a resin with high surface charge density. This means that, once the coagulation process is started, the flocculation process is subsequently activated, leading to the formation of compact flakes, easily filtered or sedimentable.

The mud thus produced purges an additional quantity of water over time, reducing its weight.

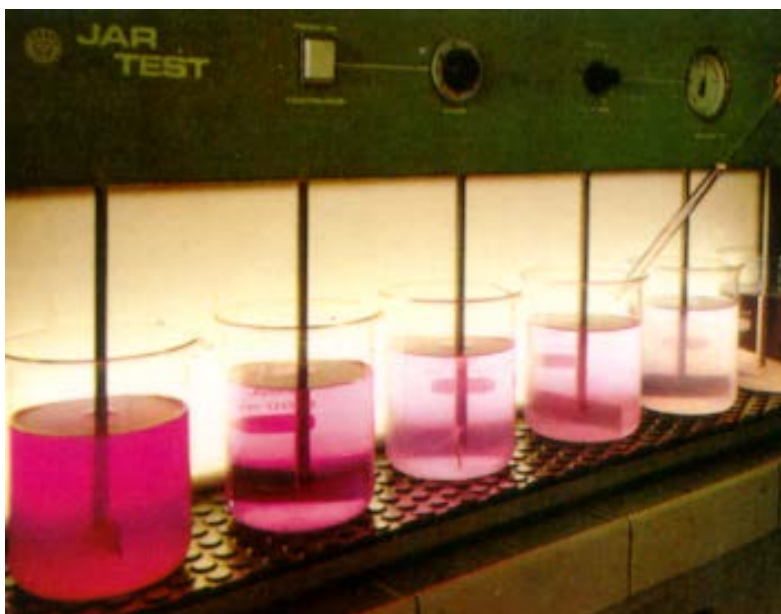
It is active in a pH range between 6 and 10 and with a suspended solids content between 5 and 40%. It can be used for the clarifying treatment of industrial waste water subject to recycling or to be sent for disposal. It is therefore ideal for: glassworks, marble workers, painting booths with water veil, tanneries, slaughterhouses and, in general, in the purification steps of the industries.

CHEMICAL/PHYSICAL DATA

Physical state	: liquid
Color	: colorless
Density _(20°C)	: 1,05 Kg/lt
Solub. in water	: total
pH _(sol. 1%)	: 6,5

HOW TO USE

The theoretical dosage is in the concentration range of 1 to 5 liters per 1 m³ of wastewater.



The addition must be done under stirring, which must last for another 5-10 minutes.

Subsequently send to decantation or filtration.

In any case, to determine an exact dosage, we recommend carrying out a preliminary Jar test in order to obtain information also on the exact mixing time and the possible need for pH correction.

WARNING: don't mix the product as it is directly with others containing active chlorine.

Protect from frost.