



KEMPERSTRIP D

Two-component immersion paint stripper

FEATURES

KEMPERSTRIP D is a paint stripper with excellent operating performance able to remove a wide range of paints and primers without compromising the integrity of aluminum alloys, widely used in the aeronautical industry.

The volatility of the lower solvent phase is drastically reduced by the uniformly stratified upper phase which acts as a "seal". This property is significantly increased thanks to a specific additive that develops a veil visible to the naked eye on the surface of the product during use.

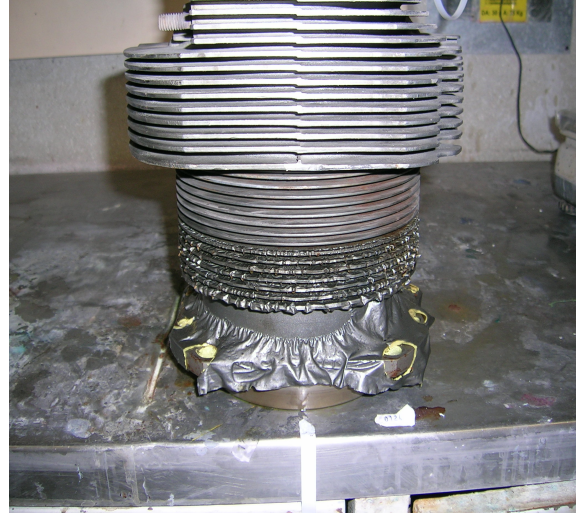
In addition to the function of limiting emissions, the upper phase performs a catalysis action towards the attack of the coating **KEMPERSTRIP D** acts through two consecutive phases: swelling and detachment that accelerate the removal of paint residues with the subsequent rinsing operation. The occurrence of the swelling phenomenon can also be very variable depending on the type of primer-paint system, without compromising the detachment.

The main advantages obtained with the use of **KEMPERSTRIP D**:

- ✓ **Effective** in the removal of epoxy, urethane, nitrocellulose and acrylic
- ✓ **Compatible** with ferrous alloys. Not reacting to acidity, it doesn't cause rust formation after rinsing.
- ✓ **Not flammable**

CHEMICAL – PHYSICAL DATA

Physical state	: biphasic liquid
Color	: intense amber
Odor	: pungent
pH	: approx. 10
Flammability	: not flammable
Phenol	: ABSENT



HOW TO USE

Before proceeding with the loading of the stripping tank if the use of the whole product content is not required, it is important to vigorously shake the stem in order to pour all the components of the two layers in the ratio provided.

The layer that has a stripping action is the lower one, but the **PRODUCT DOESN'T WORK IF THE TWO LAYERS AREN'T PRESENT SIMULTANEOUSLY**. In this regard it is necessary to adopt tanks with a surface / volume ratio which allows the surface layer to completely and uniformly cover the surface of the tank itself.

Immerse the pieces to be treated in the lower layer and leave them until the paint is completely detached, checking the action of the product at predetermined times. At the end proceed to rinse with a jet of pressure water in order to easily remove the various residues of paint.

To prolong the life of the product, it is advisable to place a perforated basket in the work container, which will be used to collect and periodically remove the flakes of paint, thus removing them to further and unnecessary action of the product.

WARNINGS

The product doesn't compromise the integrity of most aluminum and **MAGNESIUM** alloys. However, considering the huge variety of alloys currently in use, it is recommended to always carry out preliminary tests. Use the product with the D.P.I. provided for by the safety data sheet and in environments specially equipped with vapor collection and abatement systems.